

B100-302 Chopped Baby Ruth®



Issue Date:	2/22/2019	Revision:	A
-------------	-----------	-----------	---

PRODUCT DESCRIPTION	
Fudge center component covered with caramel and peanuts and enrobed with a compound coating.	

PHYSICAL ATTRIBUTES							
Appearance:	Enrobed coating surface completely covering a fudge center that is enrobed with caramel and peanuts.						
Color:	Rich chocolate color, caramel color, and light tan fudge.						
Flavor:	Blend of caramel, fudge, and fresh roasted peanuts.						
Texture:	Soft fudge and caramel finished component with crunchy peanuts.						
Pack Size:	1x30lb poly-lined corrugated case.						
Case Dimensions: L[depth]xWxH in.	12.7	10.6	12.4	Case Cube(ft ³):	0.9660	Pallet Conf. (TI / HI)	12 4

INGREDIENTS	
SUGAR, ROASTED PEANUTS, CORN SYRUP, HYDROGENATED PALM KERNEL AND COCONUT OIL, NONFAT MILK, COCOA, HIGH FRUCTOSE CORN SYRUP, GLYCERIN, AND LESS THAN 1% OF DEXTROSE, DAIRY PRODUCT SOLIDS, SALT, SOY LECITHIN, SOYBEAN OIL, CARRAGEENAN, TBHQ AND CITRIC ACID (TO PRESERVE FRESHNESS), LACTIC ACID ESTERS.	

ALLERGENS: CONTAINS: PEANUT, MILK AND SOY

Cornstarch is used as a flow agent.

NUTRITIONAL INFORMATION	
NUTRIENT	Per 100g
CALORIES	460.0
TOTAL FAT (g)	21.8
SATURATED FAT (g)	11.8
TRANS FAT (g)	0
CHOLESTROL (mg)	0.5
SODIUM (mg)	230
TOTAL CARBOHYDRATE (g)	64.9
DIETARY FIBER (g)	2.2
TOTAL SUGARS (g)	49.9
ADDED SUGARS (g)	48.1
PROTEIN (g)	6.4
VITAMIN D (mcg)	0
CALCIUM (mg)	113.3
IRON (mg)	1.2
POTASSIUM (mg)	233



Nutrition Facts	
About 567 servings per container	
Serving size 2 Tbsp (24g)	
Amount per serving	
Calories	110
	% Daily Value*
Total Fat 5g	6%
Saturated Fat 3g	15%
Trans Fat 0g	
Cholesterol 0mg	0%
Sodium 55mg	2%
Total Carbohydrate 16g	6%
Dietary Fiber 1g	4%
Total Sugars 12g	
Includes 12g Added Sugars	24%
Protein 2g	
Vitamin D 0mcg	0%
Calcium 27mg	2%
Iron 0mg	0%
Potassium 56mg	2%

*The % Daily Value tells you how much a nutrient in a serving of food contributes to a daily diet. 2,000 calories a day is used for general nutrition advice.

Brand Name:	TR Toppers	Net Weight: (Lbs.)	30.00
Country of Origin	USA	Net Weight: (Kg.)	13.61
Case GTIN	0 06 51844 10014 4	Gross Weight: (Lbs.)	32.00
Kosher	Star-D	Gross Weight: (Kg.)	14.52
Metal Detection	1.5mm Ferrous	1.8mm Non-Ferrous	2.0mm SS316
		Density (lbs/gal)	6.70

MICROBIOLOGICAL ATTRIBUTES*	
Attributes	Limits
Total Aerobic Plate Count (cfu/g)	<10,000
Yeast and Mold (cfu/g)	<100
Coliforms (cfu/g)	<10
E. coli (MPN/g)	Negative
Salmonella (/375g)	Negative

*The above attributes are provided by the product manufacturer. Parameters are guaranteed attributes. It is not indicative of product testing.

GMO STATEMENT	
X	Produced with Genetic Engineering.
	Partially Produced with Genetic Engineering.
	May be produced with Genetic Engineering.
	NOT Produced with Genetic Engineering.

STORAGE CONDITIONS	
Recommended Condition:	Best kept frozen ($\leq 0^{\circ}\text{F}$).
Alternate Condition:	May be refrigerated ($\leq 40^{\circ}\text{F}$).
Alternate Condition:	N/A

SHIPPING CONDITIONS	
Recommended Condition:	May be shipped frozen ($\leq 0^{\circ}\text{F}$).
Alternate Condition:	May be shipped refrigerated ($\leq 40^{\circ}\text{F}$).
Alternate Condition:	N/A

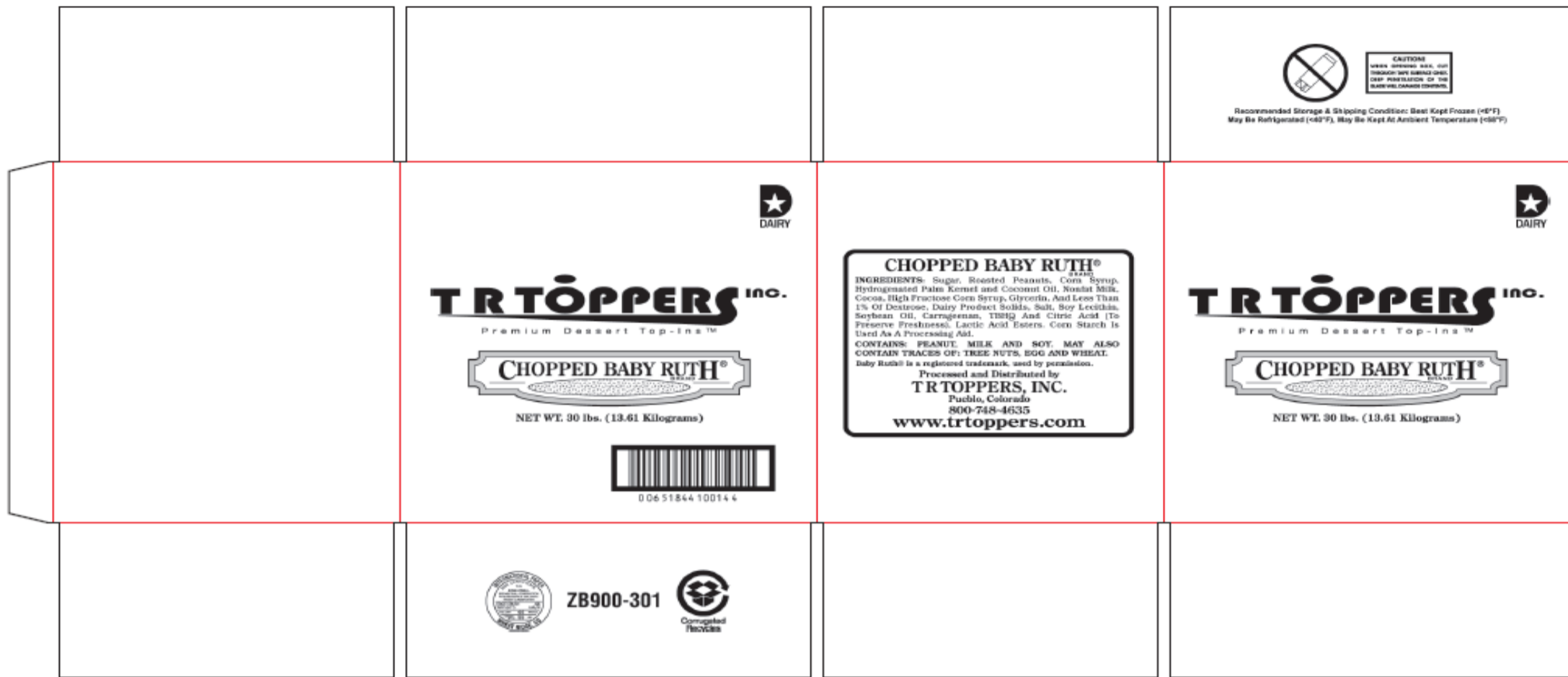
SHELF LIFE	
Recommended Shelf Life:	270 days at recommended frozen storage conditions.
Alternate Shelf Life:	180 days at refrigerated storage conditions.
Alternate Shelf Life:	90 days at ambient storage conditions.

ALLERGEN / SENSATIZER TABLE			
COMPONENT	PRESENT IN PRODUCT	PRESENT IN PRODUCTS MANUFACTURED ON THE SAME LINE	PRESENT IN THE SAME MANUFACTURING PLANT
PEANUTS AND DERIVATIVES	YES	YES	YES
TREE NUTS AND DERIVATIVES	NO	YES	YES
EGG AND DERIVATIVES	NO	YES	YES
MILK AND DERIVATIVES	YES	YES	YES
SOY AND DERIVATIVES	YES	YES	YES
WHEAT	NO	YES	YES
FISH	NO	NO	NO
CRUSTACEAN SHELLFISH	NO	NO	NO
SULFITES > 10 ppm	NO	YES	YES
MUSTARD	NO	NO	NO
SESAME	NO	NO	NO
GLUTEN	NO		
ARTIFICIAL FLAVOR SOURCE	NO		
FD&C ARTIFICIAL COLORS	NO		

GRANULATION										
Sieve Size	3/4"	1/4"	#12	Pan						
Range (%)	0 - 1	17.1 - 36.8	44.5 - 54.3	15.3 - 31.8						

CODE FORMAT	
Case Code - Left Side: JJYL, Time, B100-302	EXAMPLE: 25811 15:32 B100-302 JJ = Production Julian Date 258 = September 15; Y = Last Digit of Year 1 = 2011; L = Line (Numeric) 1 = Line 1; Time: HH:MM 15:32 = 3:32 p.m. Product Code = (e.g. B100-302)
Case Code - Right Side: JJYL, Time, B100-302	
Pallet Markings: JJY, Pallet #, B100-302	

LABEL / CASE GRAPHICS



TR TOPPERS INC.

Premium Dessert Top-Ins™



NET WT. 30 lbs. (13.61 Kilograms)



CAUTION!
WHEN OPENING BOX, CUT THROUGH TAPE SURFACE ONLY. DEEP PENETRATION OF THE BLADE WILL DAMAGE CONTENTS.

Recommended Storage & Shipping Condition: Best Kept Frozen (<0°F)
May Be Refrigerated (<40°F), May Be Kept At Ambient Temperature (<68°F)



ZB900-301



006 51844 10014 4

CHOPPED BABY RUTH®
BRAND

INGREDIENTS: Sugar, Roasted Peanuts, Corn Syrup, Hydrogenated Palm Kernel and Coconut Oil, Nonfat Milk, Cocoa, High Fructose Corn Syrup, Glycerin, And Less Than 1% Of Dextrose, Dairy Product Solids, Salt, Soy Lecithin, Soybean Oil, Carrageenan, TBHQ And Citric Acid (To Preserve Freshness), Lactic Acid Esters. Corn Starch Is Used As A Processing Aid.

CONTAINS: PEANUT, MILK AND SOY. MAY ALSO CONTAIN TRACES OF: TREE NUTS, EGG AND WHEAT.

Baby Ruth® is a registered trademark, used by permission.

Processed and Distributed by
TR TOPPERS, INC.
Pueblo, Colorado
800-748-4635
www.trtoppers.com